

LATEMODEL RESTORATION SUPPLY

FROM RESTO TO RETRO. YOUR #1 SOURCE FOR 1979-06 MUSTANG PARTS AND ACCESSORIES

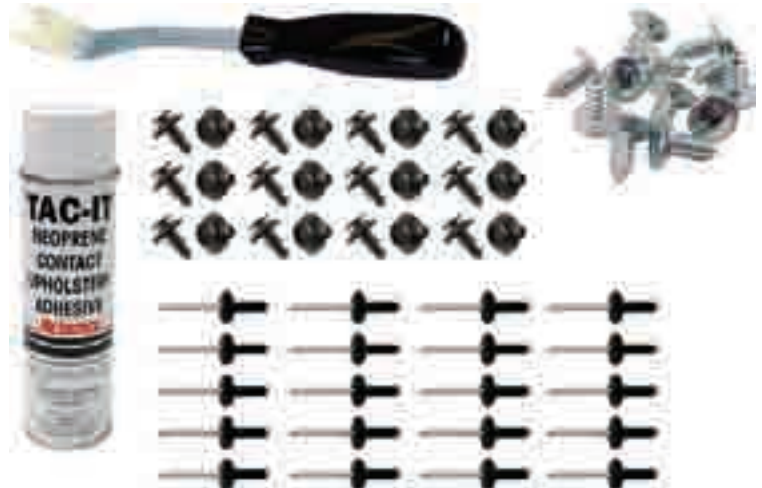


1987-93 DOOR PANEL INSTALL INSTRUCTIONS

Okay, so you just recieved your brand-spanking new door panels from Latemodel Restoration Supply and you realize that this looks like a bigger project than you orginally thought. Truthfully, if you have any qualms about completely ripping apart your old door panel, cutting, glueing, riveting, and screwing (get your mind out of the gutter) then this job is better left for your local trim and upholstery shop. If you are one of the many enthusiasts that is still feeling froggy at this point, then follow along as you are guided through the diassembly and assembly of your fox body's door panels.

Tools Needed:

- Phillips head screwdriver
- 10mm nut driver/ratchet and extension
- 10mm socket
- Box cutter or good scissors
- Flat blade screwdriver
- Diagonal cutters
- Drill with 17/64" drill bit
- Door panel removal tool
- Large rivet gun
- Marker or pen
- Heat gun - optional
- Mineral spirits/ Lacquer thinner
- Scotch brite pad
- Extra set of hands (optional)
- **PATIENCE!**



With your door panel install kit you should have received these items: 1 can of TAC-IT adhesive spray, 1 door panel removal tool, 24 door panel clips, 20 self splitting rivets, and 12 molding screws.

First things first, pick what side you want to start on and take a long hard look at your old door panel and wave goodbye. We chose to start on the passenger side, so here we go!

Note: If you are switching to a different color door panel or would like to match your arm rest, arm rest pad, and/or speaker grilles to the new door panel, please give us a call at 1-866-507-3786 for information and pricing on our line of high quality interior paint. You can also order online 24/7 at www.latemodelrestoration.com





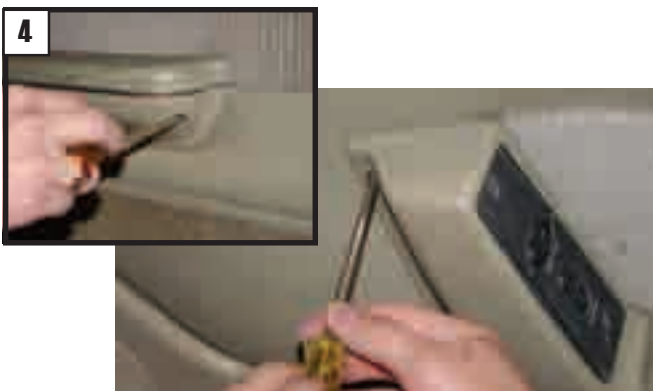
Start off by removing the mirror hole cover with the phillips head screwdriver.



Then use the phillips head screwdriver to remove the door handle bezel.



Next remove the speaker grille screw, again with the phillips head screwdriver.



Then remove the two screws (one located at each end) from the armrest, still using the phillips head screwdriver.



Take the flathead screwdriver or a pocket knife (finally a different tool!) and remove the two armrest hole plugs. Use the 10mm nut driver or ratchet setup to remove the two screws retaining the armrest.



Now lift up and pull out on the armrest, but be careful because the power window switch wiring will still be attached to the armrest. Depending on year model, you will either have two plugs for your window switch wiring, or you will need to take your phillips head screwdriver and remove the two screws retaining the switch plate to the switch cover.



Grab your door panel removal tool and work your way around the panel releasing all the push pins. Finally pull out and lift up on the panel and lift it free of the door. Lay the panel out on a large flat work area.



Now the destruction begins! Start by taking the flat blade screwdriver and loosening the staples that retain the inner door belt weatherstrip. Take the diagonal cutters and remove all of the staples and lay the weatherstrip aside for reuse later. Or if you are replacing the weatherstrip, just chunk it.



If your car is a 91-93, skip to the next step. If you are the owner of a 87-90 car, your panel will be equipped with a cloth or vinyl trim panel located above the armrest area. To remove this, simply take your flat blade screwdriver and bend up the tabs and pull the trim piece away from the panel.



Next, take your flat blade screwdriver and start bending up the tabs that retain the door lock knob grommet.



With the grommet removed, peel the vinyl off of the metal door panel piece.



Again, take the flat blade screwdriver and separate the pressed board from the metal. You will be left with this.

Before moving on, we have found that it is best to clean off the metal with mineral spirits or lacquer thinner and a scotch brite® pad. This will allow for better adhesion of the vinyl to the metal.



You will notice that the metal upper door panel has a "lip" at the lower edge. You will need to position the new board on the upper part (the side that will face toward the cars interior), center it, and mark your holes to be drilled. (Here is where the extra set of hands may be needed.) **Removal of the upper most staples retaining the vinyl to the board may be necessary to obtain proper access to the board*



Start on the side closest to the door handle opening. On the very end hole, make a mark. Skip two holes and make another mark. Skip two more holes and make a mark. At this point you will be to the open area for the armrest. Move to the other side of the panel, closest to the door lock knob hole. On the end hole make a mark, skip two and make another mark. Repeat that process until you end up back at the armrest opening. There should be ten holes marked.



Following all applicable safety precautions for electric drill usage, drill the holes in the board. Then run the drill through the corresponding holes on the metal to ensure that the rivet will pass freely through.



Now lets get on with this riveting performance! (pun intended) Lay the board back over the metal so that your previously drilled holes are aligned. Place a rivet in each end hole and one in the middle, with the rivet being installed from the front to the back. Using the large rivet gun, pop the rivet in the middle first, then the two end ones. After this, install the rest of the rivets and pop them in one by one until finished.



Pull the vinyl up over the metal and lay the panel face down. Take the paper and pad backing and roll it over the top of the metal. Right on the edge, before it would take the turn going toward the bottom of the panel, make a mark along the edge. You should end up with something like this.



Make sure the vinyl is out of the way and use the box cutter or scissors to cut the paper and pad backing **ONLY** along the mark previously made. **Do not cut the vinyl at this time!**

20



After cutting the pad and paper, it is time to glue down the vinyl. Here is where the patience will be needed, as well as an extra set of hands or small C-clamps. Start with the corners by pulling the vinyl over and mocking it up. You will see what needs to be trimmed and where slits need to be cut to make sure that there are no wrinkles once everything is glued. The optional heat gun is most useful here, as a little heat applied to the vinyl where it pulls around the corners will help to eliminate wrinkles. If you do not have a heat gun, **DO NOT USE OPEN FLAME!** A hairdryer will take longer but the same result can be achieved.

21



Now that you have the vinyl all ready to be glued, take the spray adhesive (after it is properly shaken) and apply glue to the back corner (the corner that will be toward the rear of the car when the panel is installed). Once positioned hold the vinyl tightly in place for a minimum of three minutes. Move to the front corner and repeat the last step

22



23



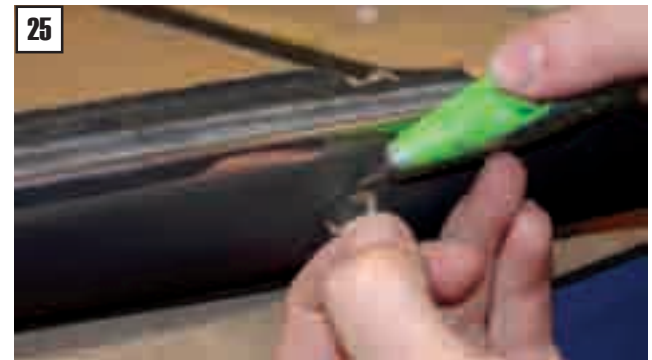
To finish up, grab your extra set of hands and your inner door belt weatherstrip and screws. Pull the remaining unglued vinyl and pull it tight. Position the inner door belt weatherstrip and install a screw in the center, then put a screw in each end. You will use six screws per panel.

24



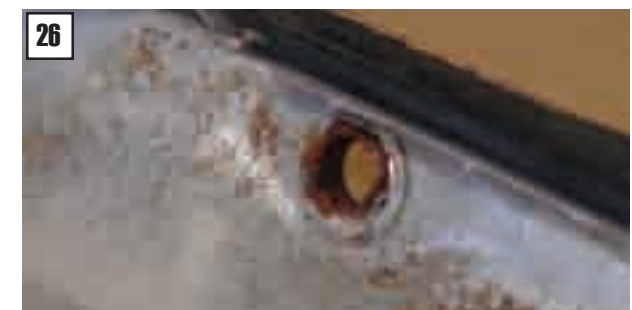
Trim up any excess vinyl.

25



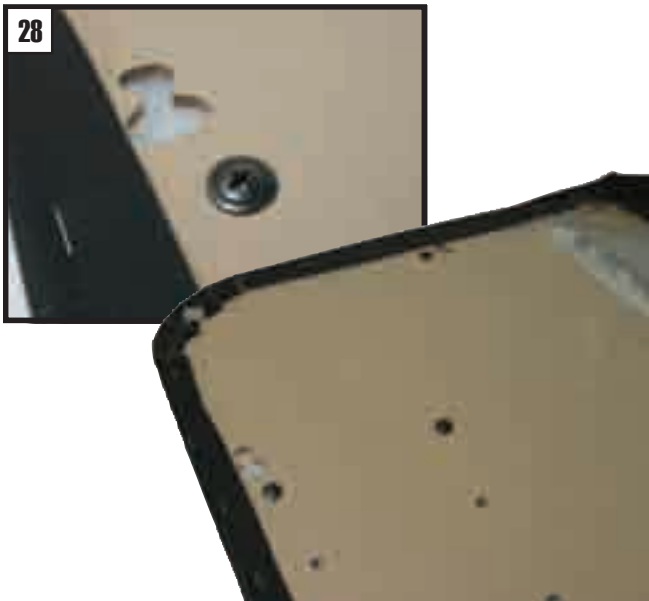
Time to cut some holes! Start with the lock knob grommet hole. After the hole is trimmed to your desire, install the previously removed grommet and bend the retaining tabs back down with the flatblade screwdriver.

26





Lay the panel face down cut out the areas for the armrest. For the door handle, grab your old vinyl and lay it over the new panel. Trace the hole and cut it out. Some trimming may still be required after the panel is installed.



For this installation, we chose not to use the factory speaker grille. If you want to re-use your factory speaker grille, use the diagonal cutters to clip off the melted part of the retaining pins. Use 1/2" pan head screws to re-attach it to the new panel. If you are using new grilles, either melt the retaining pins like the factory, or obtain pal nuts from your local hardware store. The speaker hole is perforated on the panel, so simply knock it out and use the box cutter or scissors to cut out the vinyl.



Install your new door panel clips. This is simply done by sliding the clip head first into the large opening of each retainer slot and pushing it towards the smaller opening until it "locks" in place.



Reverse the removal procedure and you are done!



Congratulations on completing you door panel resto project!

If you have any troubles with your installation, please feel free to call our business hour tech line at 254-296-6500 M-F 8am-6pm and SAT 8am-2pm (or) email your questions and/or concerns to techinfo@50resto.com.

Thank You for choosing Latemodel Restoration Supply as your source for 1979-present Mustang parts and accessories. If you require anything else for your ride, please don't hesitate to give us a call at 1-866-507-3786 or check us out online at www.latemodelrestoration.com